

BEGINNERS GUIDE



NMM GOLD (COLD)

STEP 1: CHOSE YOUR GOLD

- 2 Types of gold. Warm or Cold. This tutorial i will show u Cold Gold.
- These are the colours that i use to achieve this type of Gold



1. Base coat: Rhinox Hide
2. Mournfang Brown
3. XV-88
4. Balor Brown
5. Yriel Yellow
6. Ice Yellow Ivory



STEP 2: *CHEEEEEEEEEEESE!*

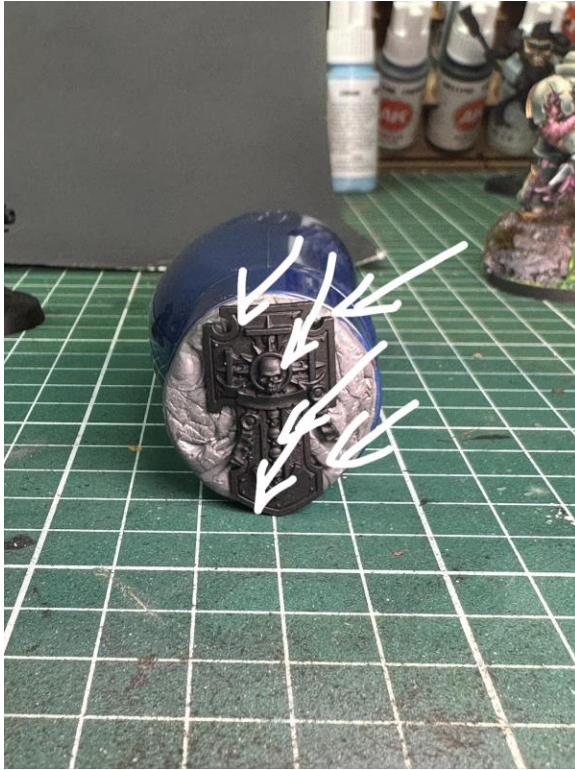
- Take a picture of your model fully assembled before taking a picture!!
- Choose your stance on how the model will represent itself.
- Choose where you want the light to be projected. Middle, top left, top right, right, left. Your choice but stick to 1

STEP 3: APPLY THE BASECOAT

BASECOAT WITH RHINOX HIDE,
EVERYWHERE YOU WANT THE GOLD.



STEP 4: APPLY MOURNFANG BROWN



As you can see, the picture does the work for you.. It shows you where the light is brightest.



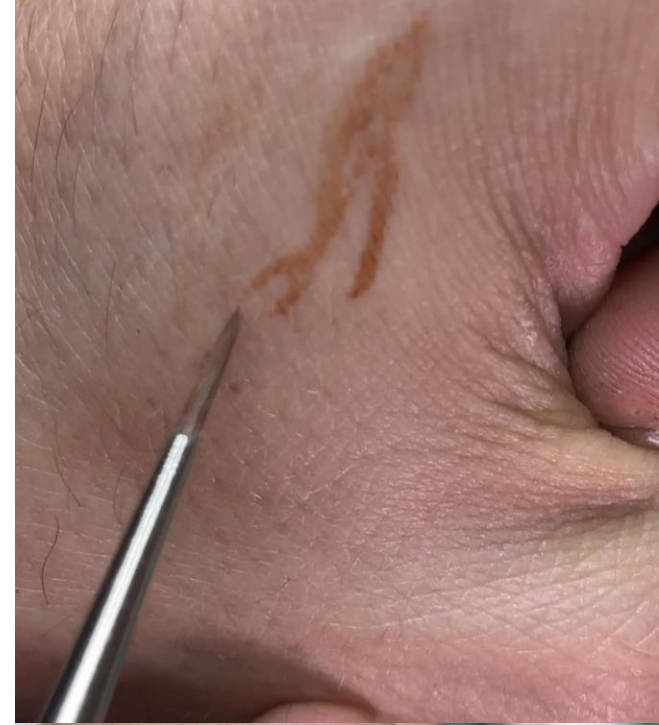
Apply Mournfang brown: Leave some space between the rhinox hide and mournfang brown layers for the next step which is a glaze.

TIP: Layer consistency = 1 drop of paint : 1 drop of paint

STEP 5: GLAZE

- Create a glaze of Mournfang Brown. (3:1)
- Start glazing and as shown with these crappy arrows. Go from dark to light.
- Test your thickness of paints on your skin, not a paper towel. As it absorbs too much of your paint.

TIP: MAKE SURE THAT YOU REMOVE THE WATER FROM YOUR BRUSH before applying paint!!



STEP 6: XV88

- We do the same thing again as before but with XV88



Layer consistency
w1:p1



Glaze
w3:p1

TIP: Make sure to stay inside your previous paint which is mournfang brown to create a nice transition in colours. (W = water / P = Paint)

STEP 7: BALOR BROWN

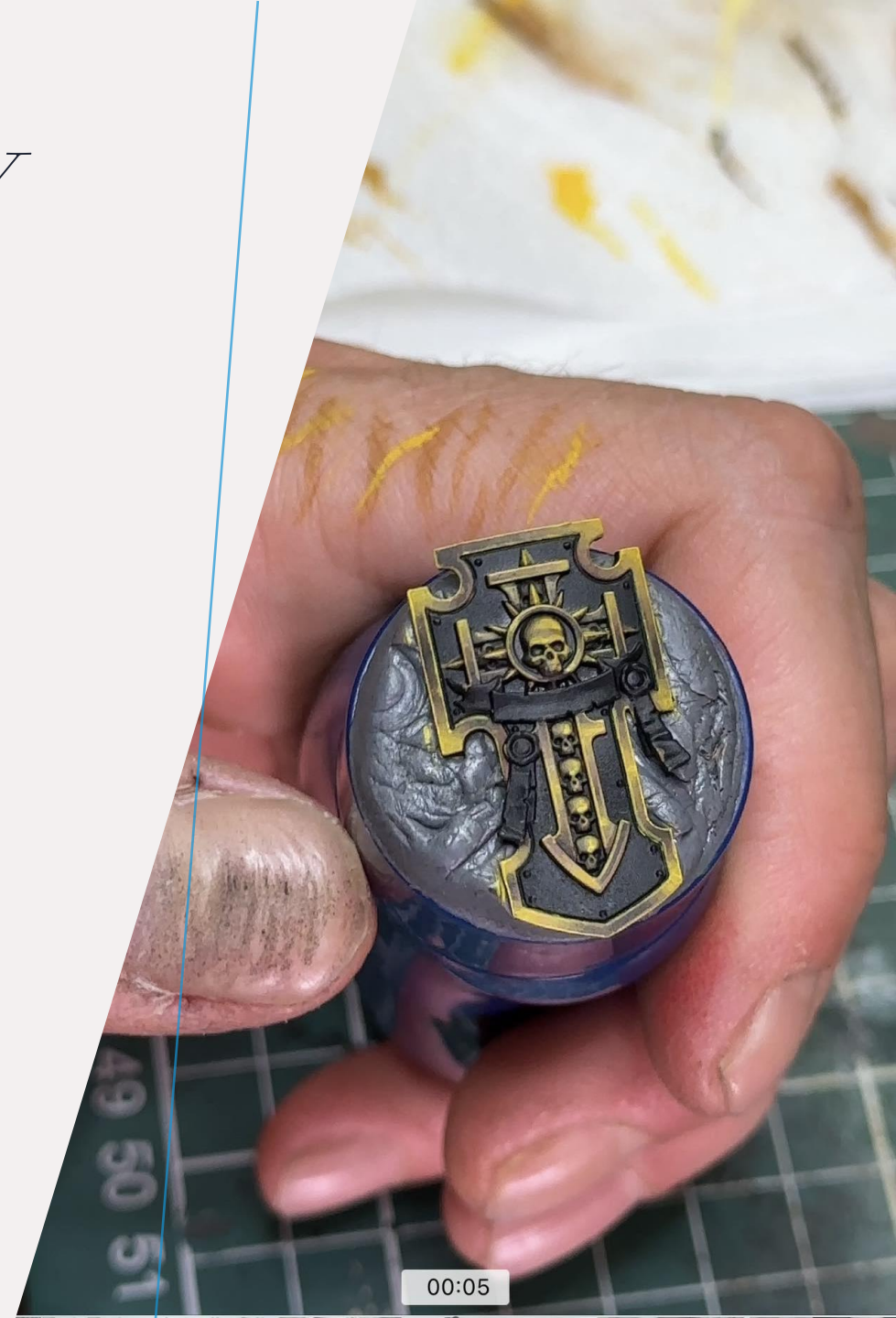
- Same as before (yep its getting repetitive now) but keep going almost there.
- Same thing again, stay inside the layer before which was XV88 for a nice transition.
- 1st layer
- Then glaze to blend it all

TIP: From now on start applying edge highlights! VERY IMPORTANT, keep repeating it every layer, and stay thin as this will give you the NMM feels!



STEP 8: YRIEL YELLOW (MIDTONE)

- Yriel yellow is your midtone and once again .. same thing but its getting smaller and smaller to apply paint so make sure your tip is very fine. (keep edge highlighting !!)



STEP 9: THE SHINE !

- Apply the ice yellow (layer consistency for edge highlights)
- Same thing again as before glaze the transition for a nice blend.
- Yes .. keep highlighting



STEP 10: SMOOTH CRIMINAL!



- To smooth all things, what i do is grab some water and add a bit of yriel yellow into in to make a glaze so thin that it acts as a filter.
- If you apply it on your hand you should barely see it

TIP: do not use this glaze as a wash! Its still a glaze. Make sure your brush is clear of water and apply it from dark to light without touching the ice yellow in the end.

FINAL STEP: TOUCH-UPS

FINAL STEP IS TO TOUCH UP
WITH ICE YELLOW AND IN THE
END APPLY IVORY IN
VERY SMALL AREAS.

TIP: many people use Ivory as a layer consistency to dot for the final shine. I use somewhat glaze consistency for it as it's much more controlled and smoother instead of that big ugly dot. Just my opinion..



FINAL RESULT

HOPE YOU LIKE IT AND I DO
HOPE IT HELPS U TO TRY
NMM.

